

# DEDEF-7000

## Defibrillator Monitor

(AED and Manual)



### Technical specifications

#### Display

Screen Type: High-resolution display

Screen Size: 7 inches (17.7 cm) diagonally

Sweep Speed: 25mm/sec

Information: Heart Rate, Lead/Pads, Alarm On/Off, SpO2, AED Functions and Prompts, Alarm Selection and Limits, Delivered Energy

#### Defibrillator

Waveform: Biphasic

Energy Display: Monitor display indicates both selected and delivered energy

Charge Prompt Type: Voice and visual prompts

Electrode Impedance Measurement Range: 0-250 Ohms

#### AED Mode

AED Function: Auto analyzes and charges x3 with programmable auto energy level selection, screen prompts, and voice prompts

Shockable Rhythms: Ventricular fibrillation, Ventricular tachycardia, QRS complex wave duration

Charge Control: Control on device front panel, press key on paddle

#### Manual Mode

Energy Selection: Selectable at 2, 5, 7, 10, 20, 30, 50, 70, 100, 150, 200, 300, 360 Joule

Synchronized Mode: Synchronizes defibrillator pulse to patient's R-wave. "SYNC" message displayed on monitor

#### ECG Monitoring

Patient Connection: 3-lead ECG cable, or 5-lead ECG cable, paddles

Lead Selection: Displayed on monitor, paddles, I, II, III, AVR, AVL, AVF, V

ECG Size: 0.25, 0.5, 1, 1.5, 2, 4 cm/mV display on monitor

Heart Rate: 20-300BPM

Heart Rate Alarm: On/Off displayed on monitor, user-selectable

Smart Alarms: Beeper/Voice prompts indicate shockable rhythm

## **SpO2 Module**

Measurement Range: 30-100%, +2% between 80%-90%, others + 5%

Alarm Range: User set high limit and low limit

Alarm Accuracy: +10% within setting values

Alarm Time Accuracy: Less than 12 sec

## **Recorder**

Paper: 50mm thermal

Speed: 12.5mm/sec, 25mm/sec, 50mm/sec. User-selectable 6-second delay

Printing Method: High-resolution, thermal array print head

Print-out Modes: Manual or automatic, user-configurable

On/Off Control: Front panel and paddle

Automatic Function: 9-second recording initiated by alarm activation or defibrillator charge or defibrillator discharge

## **Battery**

Type: Rechargeable, Ni-MH battery, 12V

Operating Time: For a new, fully charged battery 60 defibrillator discharges at maximum energy, or 3 hours minimum of continuous ECG monitoring. Additional parameters will effect operating time with different functions

## **Pacer**

Pacer function is optional

# DEAED-7000 Automated External Defibrillator (AED)



## Technical Specifications

- Portable Automated External Defibrillator (AED)
- It is easy to operate and use. It requires low for operator and can be equipped for household or public; and supply first-aid to the abrupt death promptly
- Adopting ECG analysis advanced technology of ARI Company, it can analyze the patient's ECG to judge the heart's state, whether to defibrillate and its energy. It can not only improve the success rate, also reduce the hurt to heart to lowest degree
- Pulse Type: Biphasic Waveform
- Three-step defibrillation process
- Two-button operation
- Extensive voice and visual prompts for the operator
- Continuous event recording for reporting each use to a printer or computer
- Weekly self-test to ensure readiness
- Biphasic energy output
- Lock-out protection to prevent inadvertent defibrillation

## Defibrillator

Output: Biphasic Truncated exponential

Energy Sequence: 150, 150, 200J

Charge Time: 4sec. to 150J

8 sec. to 200J

Analysis Time: 4-16 sec

Combined Analysis and Charge Time from power up after 6 shocks

From start of analysis to shock ready:

Less than 20 seconds to 150J

Less than 30 seconds to 200J

Audible Prompts: 20 audible prompts

Visual Prompts: LED prompts

Controls: Two buttons - On/Off, Shock

Output Energy Accuracy:

$\pm 15\%$  or  $\pm 3J$  (whichever is greater) to any impedance from 25 to  $175\Omega$

## **Battery**

Non-Rechargeable LiMnO<sub>2</sub> 12V, 3.0 Ah

Capacity: 100 discharges at 200 Joules or 120 discharges at 150 Joules

Shelf Life (25° C  $\pm$  15° C): 10 years (5 years storage + 5 years standby) 5 years standby (after installation)

## **Electrical Isolation**

Power: Unit operates on internal battery only

External Electrical Connections:

No external devices are attached to the unit

Risk Current Category: Internally powered equipment with defibrillator-proof BF type patient applied part (as per definition of IEC 60601-1 standard)

## **Physical**

Dimensions 300 X 210 X 80 mm

Weight 2 kg

# DEDEF-9000A Defibrillator



## Technical Specifications

Non-synchronizer	External defibrillator
Sine wave	Monophasic technology
Energy	0,3,5,7,10,20,30,50,100,200,300,360 Joule (Nominal at a resistance of 50)
Charging time	At 360J less than 10 sec
Paddle	Reusable external adult paddles (Pediatric paddles integrated)
Power Supply	Operates from the mains (AC) and battery

## Battery

Charge 3.5h to full; full charge to 35 shocks (360 Joule)  
Sealed rechargeable 12 volt NIMH battery

## Power Requirements

AC Power supply: 110V, 60 Hz /220V, 50 Hz  
Vehicle Voltage: DC 12V

# DEDEF-8000A Defibrillator

## Technical Specifications

Non-synchronizer	External defibrillator
Sine wave	Biphasic technology
Energy	0,3,5,7,10,20,30,50,100,200,300,360 Joule (Nominal at a resistance of 50)
Charging time	at 360J less than 10 sec
Paddle	Reusable external adult paddles (Pediatric paddles integrated)
Power Supply	Operates from the mains (AC) and battery

## Battery

Charge 3.5h to full; full charge to 35 shocks (360 Joule)  
Sealed rechargeable 12 volt NIMH battery

## Power Requirements

AC Power supply 110V, 60 Hz /220V, 50 Hz  
Vehicle Voltage DC 12V



# DEDEF-9000C

## Defibrillator



### Technical Specifications

-Defibrillator type	Manual, Synchronized, Asynchronized
-Out put waveform	Monophasic technology
-Energy accuracy	<+1%
-Energy selection	0,3,5,7,10,20,30,50,100,200,300,360 Joule (Nominal at a resistance of 50)
-Charging time	Maximum 8 seconds to 360 Joules
-Paddles	Reusable external adult paddles (Pediatric paddles integrated)

### Power Requirements

-AC Power supply	110V, 60 Hz /220V, 50 Hz
-Vehicle Voltage	DC 12V

### Internal Battery Backup

-Battery type	Rechargeable lead-acid battery/lithium battery (optional)
-Charging time	Time-Minimum of 4 hours for full charging
-Battery charging	During AC Power Supply operation of the device.
-Charging /Low Battery Indication	Red LED
-Battery Capacity	100% of the battery will provide 120 mins of monitoring and 30 discharges at 360 joules

## Display

- LED Dimensions: 7" diagonal {155mm\*88mm}
- Type: High resolution true-color graphic LED
- Resolution: 480X234

## ECG

ECG lead: I, II, III, AVR, AVL, AVF, V1-V6, GND

S-T segment analysis: -2.0-2.0mv

Arrhythmia analysis: yes

Protection: With stand 4000vAc/50Hz voltage in isolation and work against electrosurgical interfere and defibrillation

## Respiration

Measurement method: Thoracic impedance

## NIBP

Working mode: Manual/Automatic/stat (5 minutes)

Method: Automatic oscillation

Cuff type: Standard Adult; optional Pediatric/Neonatal

## Temperature

Measurement range 20~45°C

Resolution 0.1°C

## Pulse Oximetry (spO2)

Display spo2 value, pulse histogram, waveform, Pulse

Range 0~99%for adult, pediatric and neonatal patients

Probe standard adult finger clip

Optional pediatric Y-type clip and neonatal wrap

## Pulse Range

Pulse range: 0-255bpm

## Standard Parameter & Configuration

ECG/RESP/SPO2/TEMP/PR/NIBP/DEFIBRILLATOR

## Optional

Recorder



# DEDEF-9000D Defibrillator



## Technical Specifications

-Defibrillator type	Manual, Synchronized, Asynchronized
-Out put waveform	Monophasic technology
-Energy accuracy	<+1%
-Energy selection	0,3,5,7,10,20,30,50,100,200,300,360 Joule (Nominal at a resistance of 50)
-Charging time	Maximum 8 seconds to 360 Joule
-Paddles	Reusable external adult paddles (Pediatric paddles integrated)

## Power Requirements

-AC Power supply	110V, 60 Hz /220V, 50 Hz
-Vehicle Voltage	DC 12V

## Internal Battery Backup

-Battery type	Rechargeable lead-acid battery/ lithium battery (optional)
-Charging time	Time-Minimum of 4 hours for full charging
-Battery charging	During AC Power Supply operation of the device.
-Charging /Low Battery Indication	Red LED
-Battery Capacity	100% of the battery will provide 120 mins of monitoring; and 30 discharges at 360 Joule

## Display

- LED Dimensions 7" diagonal {155mm\*88mm}
- Type High resolution true-color graphic LED
- Resolution 480X234

## ECG

ECG lead: I, II, III, AVR, AVL, AVF, V1-V6, GND

S-T segment analysis: -2.0-2.0mv

Arrhythmia analysis: yes

Protection: Withstand 4000vAc/50Hz voltage in isolation and work against electrosurgical interfere and defibrillation

## Respiration

Measurement method: Thoracic impedance

## Standard Parameter & Configuration

ECG/RESP/DEFIBRILLATOR

## Optional

Recorder

# DEDEF-8000C Defibrillator



## Technical specifications

### Defibrillator

-Defibrillator type	Manual, Synchronized, Asynchronized
-Output waveform	Biphasic technology
-Energy accuracy	<+1%
-Energy selection	0,3,5,7,10,20,30,50,100,200,300,360 Joule (Nominal at a resistance of 50)
-Charging time	Maximum 8 seconds to 360 Joule
-Paddles	Reusable external adult paddles (Pediatric paddles integrated)

### Power requirements

-AC Power supply	110V, 60 Hz /220V, 50 Hz
-Vehicle Voltage	DC 12V

### Internal Battery Backup

-Battery type	Rechargeable lithium battery
-Charging time	Time-Minimum of 4 hours for full charging
-Battery charging	During AC Power Supply operation of the device
-Charging /Low Battery Indication	Red LED
-Battery Capacity	100% of the battery will provide 120 mins of monitoring; and 30 discharges at 360 joules

## Display

- LED Dimensions 7" diagonal {155mm\*88mm}
- Type High resolution true-color graphic LED
- Resolution 480X234

## ECG

ECG lead: I, II, III, AVR, AVL, AVF, V1-V6, GND

S-T segment analysis: -2.0-2.0mv

Arrhythmia analysis: yes

Protection: Withstand 4000vAc/50Hz voltage in isolation and work against electrosurgical interfere and defibrillation

## Respiration

Measurement method: Thoracic impedance

## NIBP

Working mode: Manual/Automatic/stat (5 minutes)

Method: Automatic oscillation

Cuff type: standard Adult; optional Pediatric/Neonatal

## Temperature

Measurement range 20~45°C

Resolution 0.1°C

## Pulse Oximetry (SpO<sub>2</sub>)

Display: spo2 value, pulse histogram, waveform, pulse

Range: 0~99%for adult, pediatric and neonatal patients

Probe: standard adult finger clip

Optional pediatric Y-type clip and neonatal wrap

## Pulse Range

Pulse range: 0-255bpm

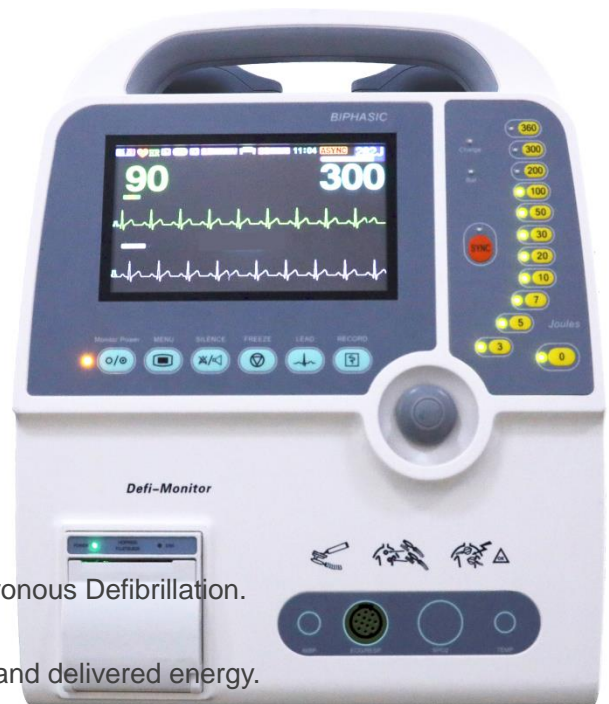
## Standard parameter & configuration

ECG/RESP/SPO2/TEMP/PR/NIBP/DEFIBRILLATOR

## Optional

Recorder

# DEDEF-8000D Defibrillator



## Technical Specifications

### Defibrillator

- Waveform: Biphasic
- Defibrillator type: Manual External Synchronous/Asynchronous Defibrillation.
- Charge Time: Less than 10 seconds to 360 Joules
- Energy Display: Monitor display indicates both selected and delivered energy.
- Charge Prompt Type: Voice and visual prompts.
- Energy Selection: Selectable at 0, 3, 5, 7, 10, 20, 30, 50, 100, 200, 300, 360 joules
- Standard Adult/Pediatric Paddles: Reusable external adult paddles (pediatric paddles integrated)

### Power Requirements

- AC-DC dual-use: Use the batteries, AC100V~240V,50/60 Hz.
- Vehicle Voltage (option): DC 12V

### Battery Description

- Standard Type: Li-ion battery Li1104c 11.1Vdc 4000mAh X2
- Standard Capacity: Up to 10 hours ECG monitoring or 60 full-energy discharges.
- Low Battery Indicator: Flashing low battery icon on display and Bat Indicator on the panel of defibrillator be on
- Recharge Rate: 80% in 3 hours. 100% in 5 hours.

### Display

- Screen Type: High-resolution display
- Screen Size: 7 inches (17.7cm) diagonally
- Sweep Speed: 12.5/25/50mm/sec
- Information: Heart Rate, Lead, Alarm On/Off, Delivered Energy
- Resolution:480\*272 pixel

### ECG

- Patient Connection: 3-lead ECG cable, or 5-lead ECG cable, paddles.

- Lead Selection: Displayed on monitor, paddles, I, II, III, AVR, AVL, AVF, V.
- ECG Size: 2.5, 5, 10, 20, 30 mm/mV display on monitor.
- Heart Rate: 20-350BPM.
- Protection: With stand 4000vAc/50Hz voltage in isolation and work against electrosurgical knife and defibrillation

### **Built-in Recorder**

- Paper: 50mm thermal.
- Printing Method: High-resolution, thermal print head.
- Record date, time sweep speed, waveform gain, heart rate, energy (joule) and ECG waveform
- Print mode
  - HR exceed limits alarm recording
  - Auto timed recording
  - Real-Time Recording
  - Defibrillation discharge trigger recording

### **Standard Configuration**

ECG/DEFIBRILLATOR/RECORDER

### **Optional Configuration**

SPO2